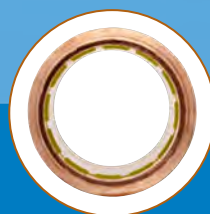


NIBCO®

AHEAD OF THE FLOW®



NIBCO® PressG System

Business-to-Business Solutions

Look to NIBCO for technology leadership.

The velocity with which e-business evolves demands that new products and services be continuously developed and introduced to keep our customers at the center of our business efforts. NIBCO provides an entire suite of business-to-business solutions that is changing the way we interact with customers.



NIBCOpartner.comsm is an exclusive set of secure web applications that allow quick access to customer-specific information and online order processing. This self-service approach gives you 24/7 access to your order status putting you in total control of your business.



Real time information includes:

- Online order entry
- Viewable invoices & reports
- Inventory availability
- Current price checks
- Order status
- Online library of price sheets, catalogs & submittals

Electronic Data Interchange (EDI) makes it possible to trade business documents at the speed of light. This technology cuts the cost of each transaction by eliminating the manual labor and paper-work involved in traditional order taking. This amounts to cost-savings, increased accuracy and better use of resources.

With EDI, you can trade:

- Purchase orders
- PO Acknowledgements
- Invoices
- Product activity data
- Advanced ship notices
- Remittance advice



Vendor Managed Inventory (VMI), a sophisticated service for automated inventory management, reduces your overhead by transferring inventory management, order entry and forecasting to NIBCO. This is an on-going, interactive partnership with NIBCO.

Through automation, VMI brings results:

- Improves customer service
- Optimum inventory efficiencies
- Better forecasting
- Cuts transaction costs
- Peace of mind
- Relief from day-to-day management



NIBCO® PressG™ System

Table of Contents



Visit our website for the most current information.

	Page		Page
Contents	1	Engineering Data	13-14
Fittings	3-7	Copper and Copper Alloy Fittings.....	14
Applications Chart	4	Installation Instructions	15-17
Adapters.....	5	1/2" - 2" Fittings	16-17
Caps	5	Frequently Asked Questions	18
Couplings	5	Press System Fittings Warranty	19
Elbows.....	6		
Tees.....	6		
Unions	7		
Accessories.....	7		
Tools and Jaws	8-12		
Standard Pressing Tool - PC-280.....	9		
Mini Pressing Tool - PC-20M.....	10		
PC-10M and PC-100 Accessories	11		
Approved Tool and Jaw Compatibility Matrix	12		

*Weighted average lead content ≤ 0.25%

NIBCO® PressG™

Quick and Easy

NIBCO PressG is user friendly, quick and easy to install. Installation can be completed in less time than traditional solder, threaded, brazed or grooved copper systems. Significant time savings means tight budgets and deadlines are met while project delays and cost overruns are avoided.

Full System Product Offering

NIBCO PressG is more than just 1/2" to 2" fittings. Our offering also includes a full line of NIBCO tools necessary to complete a total system installation.

Flameless

NIBCO PressG is easier and safer to use because there is no flame, solder or flux required. Connections can even be made on a wet tube!

Reliable

With NIBCO PressG, a joint is formed between the HNBR seal and the crimped fitting providing a permanent connection. Reliability you can count on ... NIBCO press fittings are backed by a 110-year-old company and a 25-year written guarantee.

Professional Appearance

The NIBCO PressG System creates a clean joint without the mess of excess solder or discoloration.

Joint Integrity

The NIBCO PressG System uses engineered tools, jaws and chains that are tested and approved to ensure a consistent, reliable crimp.

Performance

Patented Leak detection feature ensures uncrimped connections are found during system testing.

Visit our website for the most current information.

NIBCO® PressG™

Fittings



Visit our website for the most current information.

Applications Chart

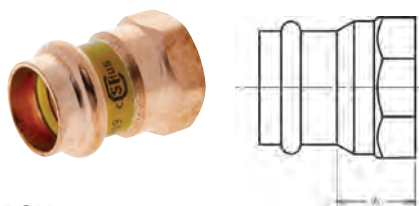
Types of Service	Comments	Pressure	Temperature	Compatible with HNBR Seal
Fuel, Oil and Lubricant				
Heating Fuel Oil		125 PSI	-40°F to 180°F	●
Diesel Fuel	Compliant with NFPA 30 and 30A			●
Liquid Propane Gas, Liquid Butane Gas	Compliant with CSA LC4	125 PSI	-40°F to 180°F	●
Kerosene		125 PSI	68°F	●
Lube Oil		200 PSI	-40°F to 180°F	●

Gases				
Compressed Air		200 PSI		●
Natural Gas	Compliant with CSA LC4	125 PSI	-40°F to 180°F	●
Oxygen - O ₂ (non-medical)	Keep Oil and Fat Free/Non-Liquid O ₂	140 PSI	Up to 140°F	●
Nitrogen - N ₂		200 PSI		●
Carbon Dioxide - CO ₂	Dry	200 PSI		●
Argon		200 PSI		●
Corgon		200 PSI		●
Hydrogen - H ₂		125 PSI		●
Vacuum		Max 29.2 inches of Mercury - Hg		●

In compliance with National Fuel Gas Code, NFPA 54, this product is not to be used for service applications where the gas contains more than an average of 0.3 grains of hydrogen sulfide per 100 scf of gas (0.7mg/100 L).

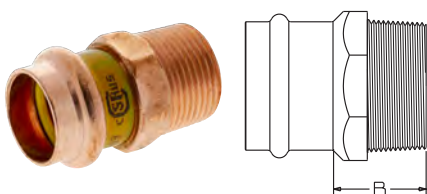
Visit our website for the most current information.

ADAPTERS



PCH603
Adapter P x F – Wrot

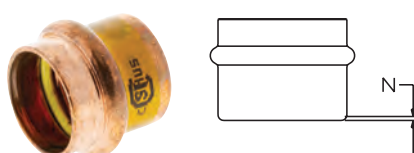
NOM. SIZE	APPROX. NET WT./LBS.	DIM. A INCHES
1/2	.103	13/16
1/2 x 3/8	.081	21/32
3/4	.159	27/32
1	.237	15/16
1 1/4	.374	1 1/16
1 1/2	.522	1 1/16
2	.672	1



PCH604
Adapter P x M – Wrot

NOM. SIZE	APPROX. NET WT./LBS.	DIM. B INCHES
1/2	.104	7/8
1/2 x 3/8	.106	27/32
3/4	.180	1 1/16
1	.255	1 3/32
1 1/4	.467	1 13/32
1 1/2	.696	1 1/2
2	.856	1 7/16

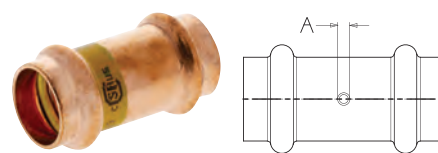
CAPS



PCH617
Cap P – Wrot

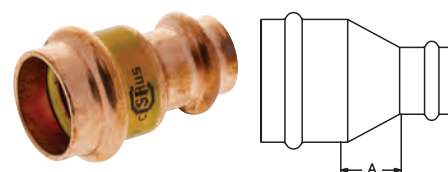
NOM. SIZE	APPROX. NET WT./LBS.	DIM. N INCHES
1/2	.046	5/32
3/4	.087	5/32
1	.124	1/8
1 1/4	.168	3/32
1 1/2	.326	3/32
2	.475	3/32

COUPLINGS



PCH600-DS
Coupling P x P – Wrot

NOM. SIZE	APPROX. NET WT./LBS.	DIM. A INCHES
1/2	.083	3/16
3/4	.157	5/32
1	.198	5/32
1 1/4	.271	5/32
1 1/2	.530	3/16
2	.691	5/32

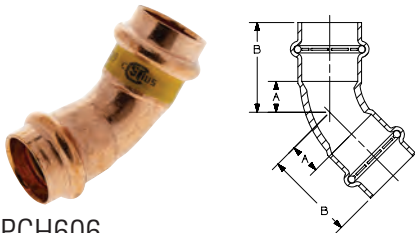


PCH600-R
Reducing Coupling P x P – Wrot

NOM. SIZE	APPROX. NET WT./LBS.	DIM. A INCHES
3/4 x 1/2	.121	1/4
1 x 1/2	.142	7/16
1 x 3/4	.184	13/32
1 1/4 x 3/4	.248	1/2
1 1/4 x 1	.233	7/16
1 1/2 x 1	.370	13/32
1 1/2 x 1 1/4	.399	9/32
2 x 1	.552	11/16
2 x 1 1/2	.662	7/16

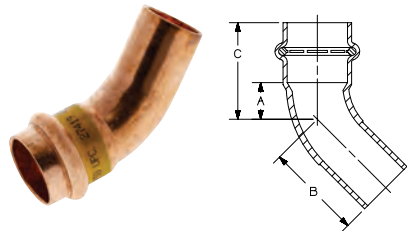
Visit our website for the most current information.

ELBOWS



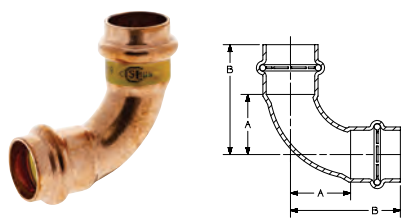
PCH606
45° Elbow P x P – Wrot

NOM. SIZE	APPROX. NET WT./LBS.	DIM. A INCHES	DIM. B INCHES
1/2	.092	13/32	1 1/8
3/4	.181	1/2	1 13/32
1	.251	5/8	1 1/2
1 1/4	.403	25/32	1 25/32
1 1/2	.723	15/16	2 5/16
2	1.063	1 3/16	2 23/32



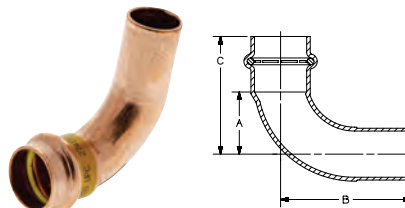
PCH606-2
45° Elbow Ftg x P – Wrot

NOM. SIZE	APPROX. NET WT. LBS.	DIMENSIONS INCHES		
		A	B	C
1/2	.094	7/16	1 5/16	1 1/8
3/4	.171	17/32	1 13/32	1 13/32
1	.270	9/16	1 17/32	1 7/16
1 1/4	.417	1 1/16	1 3/4	1 11/16
1 1/2	.719	1 13/16	2 5/16	2 3/16
2	1.031	1	2 21/32	2 1/2



PCH607
90° Elbow P x P – Wrot

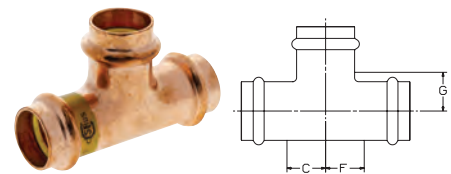
NOM. SIZE	APPROX. NET WT./LBS.	DIM. A INCHES	DIM. B INCHES
1/2	.116	23/32	1 15/32
3/4	.223	1 3/32	2
3/4 x 1/2	.201	1 5/32	2
1	.331	1 15/32	2 11/32
1 x 3/4	.321	1 5/16	2 5/16
1 1/4	.528	1 27/32	2 29/32
1 1/2	.895	2 7/32	3 21/32
2	1.480	2 15/16	4 15/32



PCH607-2
90° Elbow Ftg x P – Wrot

NOM. SIZE	APPROX. NET WT. LBS.	DIMENSIONS INCHES		
		A	B	C
1/2	.110	25/32	1 21/32	1 15/32
3/4	.219	1 1/16	2 7/32	1 31/32
1	.328	1 13/32	2 5/8	1 1/2
1 1/4	.490	1 7/8	3 3/32	2 29/32
1 1/2	.871	2 7/32	3 15/16	3 11/16
2	1.467	2 29/32	4 17/32	4 15/32

TEES

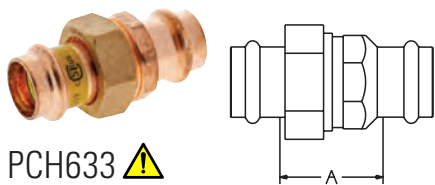


PCH611
Tee P x P x P – Wrot

NOM. SIZE	APPROX. NET WT. LBS.	DIMENSIONS INCHES		
		C	F	G
1/2	.176	23/32	23/32	15/32
3/4	.320	25/32	25/32	21/32
3/4 x 3/4 x 1/2	.276	21/32	21/32	21/32
1	.501	7/8	7/8	29/32
1 x 3/4 x 1/2	.634	13/16	1 1/16	1 5/32
1 x 3/4 x 3/4	.460	25/32	31/32	13/16
1 x 1 x 1/2	.324	21/32	21/32	7/8
1 x 1 x 3/4	.388	3/4	3/4	27/32
1 1/4	.759	1	1	1 5/16
1 1/4 x 1 1/4 x 1	.508	7/8	7/8	31/32
1 1/2	1.179	1 5/16	1 5/16	1 19/32
1 1/2 x 1 1/2 x 3/4	.740	19/32	19/32	1 3/32
1 1/2 x 1 1/2 x 1	.785	1 5/16	1 5/16	1 3/16
1 1/2 x 1 1/2 x 1 1/4	1.262	7/8	7/8	1 19/32
2	1.789	1 13/32	1 13/32	1 13/32
2 x 2 x 3/4	1.256	3/4	3/4	1 1/2
2 x 2 x 1 1/2	1.770	1 1/8	1 1/8	1 1/2

Visit our website for the most current information.

UNIONS



PCH633 ⚠
Union P x P – Wrot

NOM. SIZE	APPROX. NET WT./LBS.	DIM. A INCHES
1/2	.386	1 ⁵ / ₁₆
3/4	.527	1 ⁹ / ₃₂
1	.810	1 ¹¹ / ₃₂
1¼	1.093	1 ¹⁹ / ₃₂
1½	1.715	1 ²¹ / ₃₂
2	2.394	1 ²⁷ / ₃₂

ACCESSORIES



HNBR Seal (leak detection)

SIZE	PART No.	
1/2	T048353 PP	Leak Detect
3/4	T048355 PP	Leak Detect
1	T048357 PP	Leak Detect
1¼	T048359 PP	Leak Detect
1½	T048361 PP	Leak Detect
2	T048363 PP	Leak Detect

NOTE: Do NOT use with PC-FP600A-LF



Press Installation Gauge

SIZE	PART No.
1½ - 2	K700001PC

⚠ WARNING: This product can expose you to chemicals including lead, which is known to the State of California to cause cancer and birth defects or other reproductive harm. For more information go to www.P65Warnings.ca.gov.

Visit our website for the most current information.

NIBCO® PressG™ **Tools, Jaws & Chains**



Visit our website for the most current information.

NIBCO INC. WORLD HEADQUARTERS • 1516 MIDDLEBURY ST. • ELKHART, IN 46516-4740 • USA • PH: 1.800.234.0227
TECH SERVICES PH: 1.888.446.4226 • FAX: 1.888.336.4226 • INTERNATIONAL OFFICE PH: +1.574.295.3327 • FAX: +1.574.295.3455
www.nibco.com

NIBCO® Press System Tools

PC-280

1/2" through 4"



MATERIAL LIST

MODEL NO.	DESCRIPTION	LBS.
PC-280	Pressing Tool with 2 - 18V, 3.0 Ah Lithium-ion batteries, 110V battery charger & case	25.40
PC-10S	1/2" Standard Pressing Jaw (for PC-100 or PC-280)	4.14
PC-11S	3/4" Standard Pressing Jaw (for PC-100 or PC-280)	4.18
PC-12S	1" Standard Pressing Jaw (for PC-100 or PC-280)	4.52
PC-13S	1 1/4" Standard Pressing Jaw (for PC-100 or PC-280)	4.30
PC-14S	1 1/2" Standard Pressing Jaw (for PC-100 or PC-280)	9.61
PC-15S	2" Standard Pressing Jaw (for PC-100 or PC-280)	9.26
PC-16S	1/2"-1 1/4" (4 jaws) Standard Press Jaw Kit w/Case (for PC-100 or PC-280)	25.25
PC-17S	1 1/2"-2" (2 jaws) Standard Press Jaw Kit w/Case (for PC-100 or PC-280)	23.76
PC-7L	18V, 3.0Ah Lithium-ion Battery (for PC-280 or PC-20M)	1.30
PC-8L	110V Battery Charger (for PC-4ML or PC-7L)	2.20
PC-9L	AC Adapter (for PC-280 or PC-20M)	1.70
PC-280C	Plastic Replacement Case for PC-280 Tool	7.50
PC-16SC	Metal Replacement Case for PC-16S (1/2" - 1 1/4" Jaws)	8.10
PC-17SC	Metal Replacement Case for PC-17S (1 1/2" - 2" Jaws)	4.40
PC-51	1/2" - 2" Deburring Tool	0.92



WARNING: This product can expose you to chemicals including lead, which is known to the State of California to cause cancer and birth defects or other reproductive harm. For more information go to www.P65Warnings.ca.gov.



PC-10S thru PC-15S
Standard Pressing Jaws

PC-280
Pressing Tool



PC-7L
18V, 3.0 Ah
Lithium-ion Battery



PC-8L
110V Battery Charger



PC-51
1/2" - 2" Deburring Tool



PC-9L
AC Adapter

Visit our website for the most current information.

NIBCO® Press System Tools

PC-20M

1/2" through 1"

MATERIAL LIST

MODEL NO.	DESCRIPTION	LBS.
PC-20M	Mini Pressing Tool, 2 - 18V, 2.0 Ah Lithium-ion batteries, 110V charger & case (NO jaws)	10.10
PC-200M	Mini Pressing Tool, 3 Jaws, 2 - 18V, 2.0 Ah Lithium-ion batteries, 110V charger & case	17.20
PC-1M	1/2" Jaw (for Mini Pressing Tool - PC-10M or PC-20M)	2.09
PC-2M	3/4" Jaw (for Mini Pressing Tool - PC-10M or PC-20M)	2.05
PC-3M	1" Jaw (for Mini Pressing Tool - PC-10M or PC-20M)	2.07
PC-4ML	18V, 2.0Ah Lithium-ion Battery (for PC-20M)	0.85
PC-7L	18V, 3.0Ah Lithium-ion Battery (for PC-280 or PC-20M)	1.30
PC-8L	110V Battery Charger (for PC-4ML and PC-7L)	2.20
PC-9L	AC Adapter (for PC-280 or PC-20M)	1.70
PC-20MC	Plastic Replacement Case for PC-10M & PC-20M)	4.00
PC-50	1/2" - 1" Deburring Tool	0.42



PC-20M

Mini Pressing Tool



PC-200M

 Mini Pressing Tool with
1/2", 3/4" and 1" Jaws


PC-1M, 2M, 3M

Mini Pressing Jaws



PC-4ML

 18V, 2.0 Ah
Lithium-ion Battery


PC-8L

110V Battery Charger



PC-50

1/2" - 1" Deburring Tool



PC-7L

 18V, 3.0 Ah
Lithium-ion Battery


PC-9L

AC Adapter

WARNING: This product can expose you to chemicals including lead, which is known to the State of California to cause cancer and birth defects or other reproductive harm. For more information go to www.P65Warnings.ca.gov.

Visit our website for the most current information.

NIBCO® Press System Tools

PC-280 & PC-20M FEATURES

TOOLS

Light weight

- PC-20M Mini: 3.7 lbs. (without jaw)
- PC-280: 9.4 lbs. (without jaw)

Easy to handle / simple design

- Jaws rotate 350°
- No calibration necessary
- No complicated switches or controls
- Mini: Ergonomic compact design is easy to use in tight spaces

Interruptible crimp cycle

- Safety feature prevents injuries
- Can begin crimp, stop to align and level fitting / tube, and complete crimp

Battery

- Can be changed during crimp cycle
- Lithium-ion has short charging cycle and larger capacity
 - PC-4ML: 15 minute recharge time
 - PC-7L: 22 minute recharge time

AC Power Adapter

- Converts the tool to electric power
- Allows continuous use

Service light

- Illuminates at 10,000 cycles
- Tool will not stop operating when light illuminates
 - RED indicates battery charge status, service intervals, tool functions & faults
 - WHITE illuminates the work area

Hydraulic Pressure Check (HPC)

- An audible warning signal sounds if adequate working pressure is not achieved

PRESSING CHAINS (2 1/2" to 4" ONLY)

Uniform crimp

- Maintains proper pipe alignment

Easy to install and remove

- Once secured to fitting, chain cannot fall off prior to crimp
- Chain easily removed post crimp

Crimp Identification

- Easy to identify crimp has been made from a distance

PC-100 and PC-10M Accessories

MATERIAL LIST

MODEL NO.	DESCRIPTION	LBS.
PC-7	12V, NiMH Battery - 3.0Ah for PC-100	1.57
PC-8	120V Standard Battery Charger for PC-6 or PC-7	1.10
PC-4M	1.3 Ah NiCd 9.6V Battery for Mini Pressing Tool	0.85
PC-5M	120V Charger for Mini Pressing Tool	1.13
PC-100C	Metal Case for PC-100 Tool	14.30



PC-4M
9.6V, 1.3 Ah
NiCd Battery



PC-7
12V, 3.0 Ah
NiMH Battery



PC-8
120V Battery Charger

Visit our website for the most current information.

NIBCO® Press System Approved Tool and Jaw Compatibility Matrix

Pressing tool, jaw and chain sets are an integral part of ensuring a reliable, permanent connection between NIBCO Press System fittings, valves and copper piping. **Only use pressing tools, jaws and chain sets that have been tested and approved for use with NIBCO Press System fittings and valves.**

The following table details compatibility of **approved** pressing tools, chains and jaws with the NIBCO Press System fittings and valves:

PRESSING TOOLS		The following table details compatibility of approved pressing tools, chains and jaws with the NIBCO Press System fittings and valves:						1/2" - 1" NIBCO® Press System Mini Pressing Jaws (PC-1M, PC-2M, PC-3M)		1/2" - 1" RIDGID® ProPress® Compact Pressing Jaws		1/2" - 1-1/4" RIDGID® ProPress® C1 Compact Kit (C1 Actuator & Press Rings)		Rothenberger Compact Pressing Jaws		Stanley® VIRAX® Press Inserts		1/2" - 1 1/4" Milwaukee® M12™ Pressing Jaws		1/2" - 2" NIBCO® Press System Standard Pressing Jaws (PC-10S, PC-11S, PC-12S, PC-13S, PC-14S, PC-15S)		1/2" - 2" RIDGID® ProPress® Standard Pressing Jaws		1/2" - 1-1/4" RIDGID® ProPress® V1 Kit (V1 Actuator & Press Rings)		1/2" - 2" Rothenberger Standard Pressing Jaws		1/2" 2" REMS Standard Pressing Jaws		Stanley® VIRAX® Pressing Jaws		1/2" - 2" Milwaukee® M18™ Pressing Jaws		1/2" - 2" DEWALT DCE200 Pressing Jaws	
	SIZE	1/2" - 1"						1/2" - 2"																											
	NIBCO® PC-280	—	—	—	—	—	—	YES	YES	YES	YES	YES	YES	—	—																				
	NIBCO® PC-100	—	—	—	—	—	—	YES	YES	YES	YES	YES	YES	—	—																				
	RIDGID® 320-E	—	—	—	—	—	—	YES	YES	YES	—	—	—	—	—																				
	RIDGID® RP 330-B	—	—	—	—	—	—	YES	YES	YES	—	—	—	—	—																				
	RIDGID® CT400	—	—	—	—	—	—	YES	YES	YES	—	—	—	—	—																				
	RIDGID® RP 330-C	—	—	—	—	—	—	YES	YES	YES	—	—	—	—	—																				
	RIDGID® RP 340	—	—	—	—	—	—	—	YES	—	—	—	—	—	—																				
	Rothenberger ROMAX® Pressliner	—	—	—	—	—	—	—	—	—	YES	—	—	—	—																				
	Rothenberger ROMAX® AC ECO	—	—	—	—	—	—	—	—	—	YES	—	—	—	—																				
	REMS Akku-Press	—	—	—	—	—	—	—	—	—	—	YES	—	—	—																				
	REMS Power-Press	—	—	—	—	—	—	—	—	—	—	YES	—	—	—																				
	Stanley® VIRAX® P20+	—	—	—	—	—	—	—	—	—	—	—	YES	—	—																				
	DEWALT DCE200	—	—	—	—	—	—	YES	—	—	—	—	—	—	YES																				
	NIBCO® PC-20M Mini	YES	—	—	YES	—	—	—	—	—	—	—	—	—	—																				
	NIBCO® PC-10M Mini	YES	—	—	YES	—	—	—	—	—	—	—	—	—	—																				
	RIDGID® 100-B Compact	—	YES	YES	—	—	—	—	—	—	—	—	—	—	—																				
	RIDGID® RP 210-B Compact	—	YES	YES	—	—	—	—	—	—	—	—	—	—	—																				
	RIGID® RP 200-B	—	YES	YES	—	—	—	—	—	—	—	—	—	—	—																				
	Rothenberger Compact	YES	—	—	YES	—	—	—	—	—	—	—	—	—	—																				
	Stanley® VIRAX® M20+ Compact	—	—	—	—	YES	—	—	—	—	—	—	—	—	—																				
Milwaukee® M12™ Force Logic™	—	—	—	—	—	YES	—	—	—	—	—	—	—	—																					
Milwaukee® M18™ Force Logic™	—	—	—	—	—	—	—	—	—	—	—	—	YES	—																					

For the latest listing of approved pressing tool, jaw and chain combinations, visit nibco.com.
NIBCO recommends minor tool service performed once per year and major service every three years.
For technical or service assistance, contact NIBCO Technical Services 1-888-446-4226.

RIDGID® is a registered trademark of RIDGID, Inc.

ProPress® is a registered trademark of Viega GmbH & Co

ROMAX® is a registered trademark of ROTHENBERGER

VIRAX® is a registered trademark of Stanley Works

Milwaukee® is a registered trademark of Milwaukee Electric Tool Corporation

FORCE LOGIC™ is a registered trademark of Milwaukee Electric Tool Corporation

DEWALT® is a registered trademark of The Black & Decker Corporation

Visit our website for the most current information.

CAUTION:

NIBCO press fittings and valves (2½", 3", 4" ends) to be installed **ONLY** with NIBCO pressing tools & chains.

NIBCO[®] **PressG**[™]

Engineering Data

Visit our website for the most current information.

NIBCO® PressG™ — Engineering Data

Copper and Copper Alloy Fittings

System Description

The PressG system is a copper press connection system designed to meet the demands of natural gas and liquid propane gas in the vapor state as well as fuel oil systems. PressG utilizes an HNBR sealing element to provide permanent leak-proof connections in dimensions from ½" to 2".

Applications

Tubing: PressG fittings are approved for use with ASTM B88 Type K & L, ASTM B280, and ASTM B837 Type G hard drawn tubing in 1/2" to 2" sizes. In addition, ½" and ¾" sizes are approved for use with annealed tubing in compliance with ASTM B88, ASTM B280, and ASTM B837. When annealed tube is used, rounding and sizing of the tube ends must be performed where needed. PressG fittings are approved for above and below-ground applications (Consult with the local Authority Having Jurisdiction prior to installation).

Operating Parameters

- Operating Pressure: Ranges from 125 to 200 psi max, depending on the application. See NIBCO application chart.
- Operating Temperature: -40°F to 180°F

System Benefits

- Fast and Easy to use
- Permanent Connections
- Professional Appearance
- Flame Free
- Environmentally Friendly

Fittings

Fittings are provided with a factory-installed HNBR sealing element which is yellow in color. This sealing element features a patented leak detect design that provides quick and easy identification of connections that have not been pressed prior to putting the system into operation.



Listing and Certifications

- ANSI LC4/CSA 6.32
- ICC-ES PMG 1502
- IAPMO/UPC LC-4

Compliant with

- IFGC International Fuel Gas Code
- NFPA 54/Z223.1 National Fuel Gas Code
- NFPA 58 Liquefied Petroleum Gas Code
- UPC Chapter 12 Fuel Piping
- NFPA 30 Flammable and Combustible Liquids Code
- NFPA 30A Code for Motor Fuel Dispensing Facilities and Repair Garages
- NFPA 31 Standard for the Installation of Oil Burning Equipment (supply line only)

Visit our website for the most current information.

NIBCO[®] **PressG**[™]

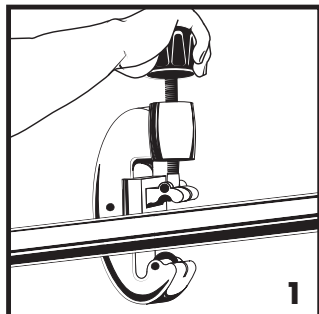
Installation Instructions

Visit our website for the most current information.

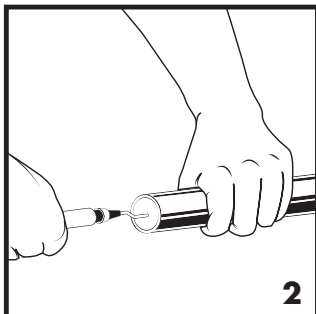
NIBCO® PressG™

1/2" - 2" Fittings Installation Instructions

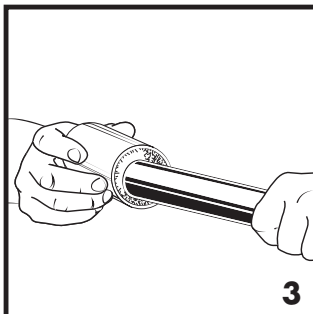
For Types K & L hard copper tubing in 1/2" to 2" sizes and annealed copper tubing in 1/2" & 3/4" sizes



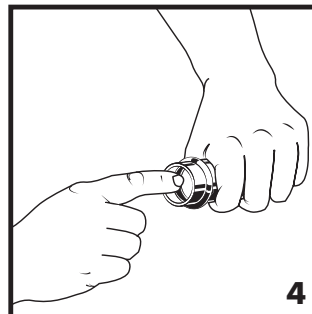
1. Select clean, undamaged copper tube and cut to desired length. Cut tube end square using a pipe cutter or fine-toothed steel saw.



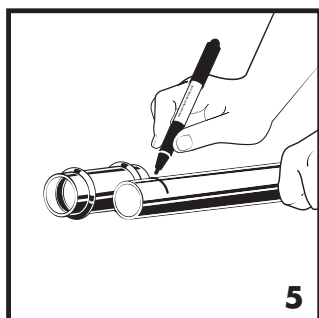
2. Deburr the tube inside diameter using a rounded file or a deburring tool.



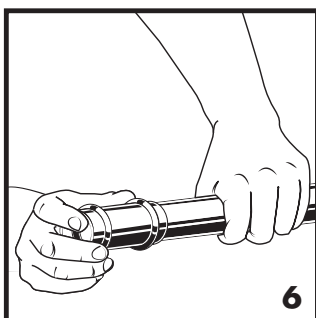
3. Deburr the tube outside diameter using a rounded file or a deburring tool. Clean the tube end of all dirt, oil and grease as well as copper dust and chips from sawing.



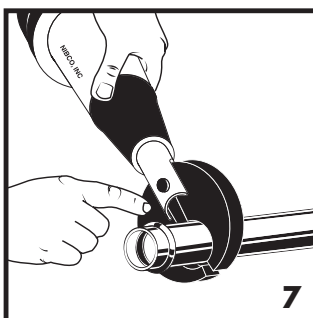
4. Check the fitting to make sure that the seal is in place, clean and free of contaminants. Only original NIBCO yellow HNBR seals are to be used. Do not use oils or lubricants.



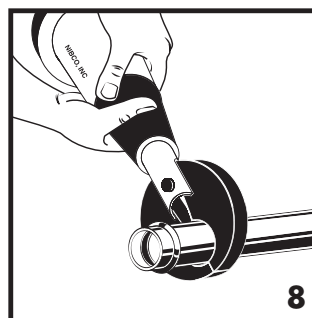
5. Mark the tube with the proper insertion depth using a permanent marker as indicated by the Insertion Depth Chart or NIBCO Insertion Depth Tool. Improper insertion depth may result in an improper seal.



6. Insert the tube into the fitting using a twisting motion to the marked depth. NOTE: End of tubing must contact stop.



7. Ensure that the proper pressing jaws are installed in the pressing tool and squeeze jaw arms to open jaw set. Place open jaws around the fitting end and ensure that the jaw is properly aligned with the contour of the fitting.



8. Make sure the tube is inserted to the proper depth in fitting and with the tool at a right angle to the tube, start pressing procedure.

Tube Insertion Depth Chart

Tube Size (In.)	Insertion Depth (In.)
1/2	1 1/16
3/4	7/8
1	7/8
1-1/4	1
1-1/2	1-3/8
2	1-1/2

WARNING	MISE EN GARDE !	ADVERTENCIA
Read press tool operator's manual and fitting manufacturer's installation instructions before using. Failure to follow all instructions may result in extensive property damage and/or serious personal injury. Call the NIBCO Technical Service Department at 1.888.446.4226 if you have any questions or need assistance.	Familiarisez-vous avec le mode d'emploi de la presse et les instructions du fabricant des raccords avant d'utiliser l'appareil. Le non-respect de leurs consignes risquerait d'augmenter les risques de dégâts matériels importants et/ou de graves blessures corporelles. Veuillez adresser toutes questions éventuelles ou demandes de mode d'emploi à la NIBCO en composant le 1.888.446.4226.	Antes de usar, lea el Manual del Operario de esta herramienta de presión y las instrucciones de instalación del acoplamiento proporcionadas por su fabricante. Pueden ocurrir daños materiales de gran envergadura y lesiones corporales de gravedad si no se respetan todas las instrucciones. Si tiene alguna pregunta o desea pedir un manual, llame al Departamento de Servicio Técnico de NIBCO al 1.888.446.4226.

Leak Testing: Unpressed connections are located by pressurizing the system with air. When testing with compressed air the proper maximum pressure is 15 psi. Following a successful leak test, the system may be pressure tested up to 200 psi if required by local code requirements or project specifications. Leak testing with air can be dangerous at high pressures.

The following standards, codes and instructions should be followed when installing NIBCO PressG fittings for fuel gas:

- The installation of the fuel gas system shall be in accordance with local codes, or in the absence of local codes, in accordance with the National Fuel Gas Code NFPA 54, the LP-Gas Code NFPA 58 as applicable.
- Copper tubing shall comply with one of the following standards: Type K or L ASTM B88, ASTM B280, or Type G ASTM B837. When annealed tube is used, rounding and sizing of the tube ends must be performed where needed.
- Undue stress or strain on the fittings and the tubing is to be avoided.
- Concealed tubing and fittings shall be protected from puncture threats.
- If the installation requires components in addition to those supplied by the fitting manufacturer, those components shall be specified. The instructions shall state that only the components provided or specified by the manufacturer are to be used in the installation.
- The fitting/tubing system shall not be used as a grounding electrode for an electrical system.
- The inspection, testing and purging of the installation shall be performed using procedures specified in Part 4 of the National Fuel Gas Code NFPA 54, ANSI Z223.1, the LP-Gas Code NFPA 58 section 3.2-10 as applicable or in accordance with the requirements of the applicable local codes.
- For use with natural, propane, mixed and manufactured gasses in the vapor state, not in the liquid state.
- The fitting/tubing system shall not be used as a means of support.

Visit our website for the most current information.

NIBCO® PressG™ — Crimp Integrity Testing

Instructions for Fittings

PRESSURE TESTING:

NIBCO recommends the following leak testing procedures when installing NIBCO PressG with the leak detection feature. These test procedures allow the installer to find un-pressed connections while the system is being tested under pressure. The uniquely designed HNBR o-ring allows fluids or gases to flow past the seal and leak when the fitting has not yet been pressed. When the fitting has been pressed, the o-ring will create a leak-tight seal around the tube.

AIR LEAK TESTING:

1. Pressurize system up to 15 psi maximum using dry, oil free compressed air, carbon dioxide, or nitrogen.
2. Allow system pressure to stabilize for a minimum of 2 hours.
3. If system pressure has dropped, add more air to bring entire system up to 15 psi maximum. If system pressure increases above 15 psi, bleed off excess pressure to ensure system is at a maximum pressure of 15 psi.
4. If the system pressure continues to drop, inspect all joints for un-pressed fittings. The NIBCO PressG with the leak detection feature are designed to leak in an un-pressed condition.
5. Check all press joints for air leaks using a commercially available leak test solution or a soap and water mixture.
6. Once the system has been confirmed to be leak free, pressure can be increased to the recommended working pressure to verify system integrity.

SYSTEM INTEGRITY TESTING*:

Once a system has been confirmed to be properly installed and no press connections have been left uncrimped, the system is recommended for testing up to the maximum non-shock working pressure of 200 psi hydrostatic.

NOTE: While NIBCO PressG products are tested to pressures as high as 600 psi, the product system rating limitation of 200 psi is in place to ensure a safety factor of three-times proof-testing according to ASME B16.51 Copper and Copper Alloy Press-Connect Pressure Fittings.

SYSTEM INTEGRITY TESTING AT HIGHER PRESSURES*:

NIBCO PressG products can be tested at hydrostatic pressures higher than 200 CWP, not exceeding a maximum pressure of 300 psi hydrostatic for a maximum test duration of 24 hours, when assembled and tested according to the methods prescribed above.

CAUTION: These testing parameters and protocols apply only to NIBCO products as detailed above: NIBCO accepts no responsibility or liability for any other manufacturer's products that may be damaged as a result of such testing.

*System integrity testing applies to leak detect and non-leak detect fittings and valves.

Visit our website for the most current information.

NIBCO® PressG™ — Frequently Asked Questions

What is the NIBCO product offering?

NIBCO PressG features a full range of copper and copper alloy fittings, commercial valves, accessories and pressing tools, jaws and chains for use with K and L copper water tube.

What is the system temperature rating?

NIBCO PressG is rated over a temperature range of -40°F to 180°F.

What are the approved system applications?

See page 4 for a complete listing of approved applications.

How does the patented leak detection system work?

The HNBR seal has tabs that allow an uncrimped connection to leak during system testing.

What was the testing protocol for NIBCO PressG fittings and valves?

NIBCO PressG fittings and valves were subjected to a wide range of performance tests including dimensional verification, thread end specification, hydrostatic burst strength, unrestrained pressure, static torque, bending, vacuum pressure, cyclic pressure, vibration, thermo-cycling and dynamic torque.

Can other available pressing tools and jaws be used on the NIBCO PressG?

See page 12 for a complete listing of approved tools and jaws.

Can NIBCO PressG connection be re-crimped?

If for any reason the press cycle is interrupted, it is possible to re-crimp a NIBCO PressG connection. However, when re-crimping the connection, the jaws must be properly aligned so that the crimp is performed in the same location as the original.

Are NIBCO PressG fittings available with solder or threaded by Press System connection?

NIBCO offers many PressG fitting combinations by soldered or threaded connection. Please note, always solder the standard wrought connection first when possible. Prior to soldering, remove the press end HNBR o-ring, solder, allow the fitting to cool, insert the HNBR O-ring, and then press the connection.

Can a fitting be soldered close to a PressG connection?

NIBCO recommends soldering at least 12 inches away from the Press System connection. If this length is not possible, either solder the joint prior to connecting the press fitting or wrap the connection with a cold wet cloth.

Is NIBCO PressG approved for underground use?

In accordance with local plumbing codes, NIBCO PressG can be installed underground.

Is NIBCO PressG compatible with standard disinfectant cleaning agents?

Yes, NIBCO PressG is typically compatible. For specific cleaning agent compatibility, contact NIBCO Technical Services at the below noted number.

Visit our website for the most current information.

NIBCO® PressG™ Limited Warranty

NIBCO INC. LIMITED WARRANTY

Applicable to NIBCO PressG

NIBCO INC. warrants each NIBCO PressG System fitting to be free from defects in materials and workmanship under normal use, service, and maintenance in accordance with the product specifications (including, but not limited to installation recommendations) for a period of twenty-five (25) years from the Warranty Commencement Date. The Warranty Commencement Date shall be the date of installation.

NIBCO Press System tools to be free from defects in materials and workmanship under normal use, service, and maintenance in accordance with the product specifications for a period of two (2) years from the date of purchase.

NIBCO PressG System fittings and tools are referred to herein as "NIBCO Products."

NIBCO will repair or replace – at its option and at no charge – NIBCO Products that have been determined by NIBCO, or an authorized representative or agent thereof, to have failed solely because of a defect in materials or workmanship under normal use, service, and maintenance during the warranty period. Replacements shall be shipped free of charge to the owner.

This limited warranty applies to all NIBCO Products installed, tested, applied, and used in accordance with NIBCO's approved and published recommendations and instructions.

This warranty does not cover any failure or damage for or caused by:

1. any product, parts, or systems which are not manufactured or sold by NIBCO;
2. any NIBCO Product which is used for purposes other than a purpose authorized by NIBCO;
3. any NIBCO Product not installed, tested, applied, used, or maintained in accordance with NIBCO's recommended installation guidelines and instructions;
4. any NIBCO Product not installed or used in accordance with applicable codes;
5. any damage caused by, contributed in whole or in part by, or resulting from, any of the following:
 - a. abuse, misuse, mishandling, alteration, tampering, neglect, or accidental damage such as, without limitation, vandalism;
 - b. natural disasters, such as, without limitation, flooding, windstorm, and lightning;
 - c. attachments or modifications not authorized by NIBCO;
 - d. external, physical or chemical qualities, or an unsuitable or hostile environment,;
 - e. any defects other than those in material or workmanship; or
 - f. any other cause beyond the control of NIBCO.

NIBCO DISCLAIMS ANY AND ALL LIABILITY FOR ANY OTHER DIRECT OR INDIRECT, INCIDENTAL, OR CONSEQUENTIAL DAMAGES OF ANY KIND, INCLUDING BUT NOT LIMITED TO, ECONOMIC LOSS, LOSS OF BUSINESS, LOST PROFITS, PUNITIVE DAMAGES, MOLD INTRUSION, WATER DAMAGE, ETC.

Some states do not allow the exclusion or limitation of damages, so the above limitation or exclusion may not apply to you.

THIS WARRANTY IS THE ONLY WARRANTY FOR THE NIBCO PRODUCTS PROVIDED BY NIBCO, AND IS AND SHALL BE IN LIEU OF ANY AND ALL OTHER WARRANTIES, EXPRESSED OR IMPLIED, INCLUDING, BUT NOT LIMITED TO, AN IMPLIED WARRANTY OF MERCHANTABILITY OR FITNESS FOR A PARTICULAR PURPOSE, AND FOR ALL OTHER OBLIGATIONS OR LIABILITIES ON THE PART OF A MANUFACTURER. NO EMPLOYEE OF NIBCO, OR ANY OTHER DISTRIBUTOR, AGENT, OR OTHER PERSON OR BUSINESS, IS AUTHORIZED TO MAKE ANY OTHER WARRANTY ON BEHALF OF NIBCO.

Some states do not allow limitations on implied warranties, so the above limitation may not apply to you.

In the event any defect occurs which is believed to be covered by this warranty, NIBCO Technical Services must immediately be contacted by calling 888.446.4226 or emailing CS-TechnicalServices@nibco.com. NIBCO Technical Services after being contacted will make further arrangements for the product's return to NIBCO at the customer's expense for review and evaluation.

This warranty gives you specific legal rights, and you may also have other rights which vary from state to state.



Visit our website for the most current information.

how to order

State quantity, figure number and size for each valve you wish to order. See individual valve catalog pages for specific or special product designations.

HOW MANY TO ORDER

NIBCO valves are decimal packed for your convenience in handling, shipping and stock-keeping. Number in master carton varies with item.

POLICY ON RETURNS TO FACTORY

NO NIBCO valves are to be returned without prior written agreement. Transportation must be prepaid. A 20% charge will be made to cover cost of rehandling and reinspection.

TECHNICAL ASSISTANCE

Engineers, contractors, wholesalers or manufacturers may obtain special or technical assistance from any factory representative of NIBCO. Write, fax or phone.

NIBCO INC.
World Headquarters
1516 Middlebury Street
Elkhart, IN 46516-4740
USA

Phone: 1.574.295.3000

Fax: 1.574.295.3307

Technical Service Phone: 1.888.446.4226

Fax: 1.888.336.4226

To the best of our knowledge, the information contained in this publication is accurate. However, NIBCO does not assume any liability whatsoever for the accuracy or completeness of such information. Final determinations of the suitability of any information or product for the use to be contemplated is the sole responsibility of the user. The manner of that use, and whether there is any infringement of patents, is also the sole responsibility of the user.

globally connecting you at all levels

It's a new age of business, and a new way at NIBCO. From Elkhart, Indiana to Lodz, Poland, and points beyond, our company has integrated manufacturing, distribution, and networked communications to provide a seamless source of information and service, 24 hours a day, 7 days a week. But this integration hasn't happened overnight. It's been part of a long-term strategic process that has pushed us to reconsider every aspect of our business. The result? We're a vertically integrated manufacturer with the products and systems in place to deliver low cost and high quality. NIBCO products are manufactured under a Quality Management System conforming to the current revision of ISO-9001 International Standards. We know the flow control industry is only going to get more demanding, and we are more than ready. We will continue to lead. That's what NIBCO is all about.



World Headquarters



Elkhart, Indiana

MANUFACTURING

Metal Valves and Fittings



Blytheville, Arkansas



McAllen, Texas



Nacogdoches, Texas



Stuarts Draft, Virginia



Worcester, Massachusetts

Plastic Pipe, Valves, and Fittings



Greensboro, Georgia



Goshen, Indiana

Industrial Plastics



Charlestown, Indiana

DISTRIBUTION

International



Reynosa, Mexico



Lodz, Poland

U.S. Distribution Centers



Elkhart, Indiana

INTERNATIONAL

Global Offices



Elkhart, Indiana



Lodz, Poland

*Denotes U.S. and International Direct Shipping Locations

VALVES



Pressure-rated bronze, iron and alloy-iron gate, globe and check valves • Pressure-rated bronze ball valves • Boiler specialty valves • Commercial and industrial butterfly valves • Lined butterfly valves • Circuit balancing valves and kits • Carbon and stainless steel ball valves • ANSI flanged steel ball valves • Lined ball valves • Pneumatic and electric actuators and controls • Grooved ball and butterfly valves • High performance butterfly valves • UL/FM fire protection valves • MSS specification valves • Bronze specialty valves • Low pressure gate, globe, check and ball valves • Frostproof sillcocks • Quarter-turn supply stops • Quarter-turn low pressure valves • PVC and CPVC plumbing and industrial ball valves • Bronze and iron y-strainers • Sample valves • Sanitary valves • Lead-free valves • Hydronic valves • Labor saving valves • Manifold systems • Water temperature control valves • System quality valves • Press x PEX transition valves

FITTINGS

Wrot and cast copper pressure and drainage fittings • Cast copper alloy flanges • Powder coated steel companion flanges • Wrot and cast press fittings • ABS and PVC DWV fittings • Schedule 40 PVC pressure fittings • CPVC CTS fittings • CPVC CTS-to-metal transition fittings • Schedule 80 PVC and CPVC systems • Lead-free fittings • Press x PEX transition fittings • Cast bronze push fittings

LEAD-FREE: Weighted average lead content $\leq 0.25\%$



INDUSTRIAL PLASTICS

PVC and Corzan® CPVC schedule 80 fittings, true union ball and ball check valves, butterfly valves, and specialty valves • Polypropylene and Kynar® PVDF schedule 80 pipe, fittings, and true union ball and ball check valves • Pneumatic and electric actuation systems

Corzan® are registered trademarks of the Lubrizol Corporation
Kynar® is a registered trademark of Arkema Inc.



eNIBCO

EDI—Electronic Data Interchange • VMI—Vendor Managed Inventory • NIBCO.com • NIBCOpartner.com



NIBCO[®]
AHEAD OF THE FLOW[®]

NIBCO INC.
WORLD HEADQUARTERS
WEB: www.nibco.com

1516 MIDDLEBURY STREET
ELKHART, IN 46516-4740
USA

DOMESTIC CUSTOMER SERVICE
PHONE: 800.234.0227
FAX: 800.234.0557

TECHNICAL SERVICE
PHONE: 888.446.4226
FAX: 888.336.4226

INTERNATIONAL OFFICE
PHONE: +1/574.295.3327
FAX: +1/574.295.3455